



Building the future



# The Company



**Established in 1981, Pinewood Structures is one of the largest manufacturers of timber frame structures in the country. The company has built up an enviable reputation for being at the forefront of timber frame technology and for always putting the needs of its customers first.**

From its two factories in Gamlingay, Bedfordshire, the company designs and manufactures complete timber frame packages for a wide variety of buildings.



The team of experienced designers and skilled estimators, qualified technicians and dedicated production staff all contribute to Pinewood's success and ensure that every customer gets exactly what they want – every time.

## In Partnership

Pinewood's aim is to produce the best. Working in close partnership with clients ensures that project timing, cost, quality and overall performance are all closely monitored and that the UK Timber Frame Association 'Q' Mark Plus Standards are continually maintained. By fostering a culture of close collaboration between all parties, Pinewood is setting the standards by which others are judged.

## Quality Guaranteed

Stringent quality assurance programmes, precision engineering and years of experience are part of the Pinewood guarantee of quality. Complete confidence in quality is backed up by ISO 9001-2000 approval, the UK Timber Frame Association 'Q' Mark Plus Accreditation, currently one of only a select few manufacturers in the United Kingdom to have achieved this important accreditation. Outstanding quality comes as standard.

## Mission Statement

Pinewood's Passion is to provide a reliable, flexible and valued service to major builders and developers – partnering with them to achieve quality and economies of design, manufacture and supply of timber frame buildings – anywhere in England and Wales.



Cover photographs: (main) Student accommodation, Preston.  
(insets) Retirement village, Berkhamstead. Student accommodation, Wolverhampton. Luxury apartments, Chester.  
Apartments, Waltham Abbey. Student accommodation, Huddersfield



# The Timber Solution

**Timber frame technology is quite simply the world's most popular building method. Across the developed world, over 70% of low-rise housing uses the system and an increasing proportion of multi-storey and commercial developments are turning to this method of construction.**

This dominance is hardly surprising when you consider what it has to offer. Wood is an environmentally friendly, renewable resource; it combines strength with versatility and is an excellent natural insulator. Timber frame buildings offer better levels of acoustic and thermal insulation, making them more energy efficient and comfortable to live and work in.

The combination of factory-based prefabrication and precision engineering technology means that construction programmes are usually shorter for timber frame projects. The amount of on-site work is reduced and overall build quality is higher than with alternative methods, yielding obvious benefits for the builder/developer.

## Construction

At Pinewood, we will design the exact timber frame specification needed for your scheme's design requirements, precise details will alter depending upon the type of

building, and the technical team will always be happy to advise about your specific requirements.

The typical timber frame structure is a lot more than just a wooden frame – it is a sophisticated sandwich of modern materials comprising: A plasterboard lining which conceals a layer of high performance, non-combustible insulation and vapour barrier, whilst the exterior sheathing board incorporates the breather membrane. The end result is a strong timber frame capable of withstanding lateral loads and supporting multi-storey and wide span structures. In practice, this results in a cost-efficient building which keeps the occupants warm, safe and dry.

## Choice

Of course a timber frame is only part of the story – once the basic structure is there, the outer skin can be a combination of materials. Increasingly, the outer skin, which is normally brickwork could be provided by natural stone, render, weatherboarding, tile hanging or any combination of finishes subject to local planning approvals.





# Housing

**Pinewood supplies to most house builders and developers, delivering to sites nationwide. The company's technical support team works in close partnership with them to supply the ideal construction method. The company strives to offer creative and cost-effective housing solutions to all its clients.**

Working in close harmony with clients' architects, Pinewood is able to meet the fast-track demands of commercial housebuilders. Faster build programmes lead to obvious cost savings, whilst increased accuracy of factory-

based manufacturing means that the end product is invariably of higher quality than masonry counterparts.

Developments are scheduled around a 'just in time' ordering policy, whereby units arrive on site at the time they are needed, ensuring that the construction team are always fully operational.

# Commercial

**The economies of timber frame building methods are obvious, which is why developers and property companies across the country are using timber systems for hotels, leisure complexes and all manner of commercial buildings. Winter construction is not a problem for timber frame – even in freezing conditions work can continue on site unabated, resulting in shorter construction programmes and quicker occupancy.**

Maintenance and running costs of a timber frame building are generally lower than masonry built alternatives due to the inherently high insulation values. Flexibility is also a key issue and the compatibility of key elements means that alterations or extensions can be easily accommodated within future development plans.

## Multi storey

Five and six storey buildings are now a familiar part of the timber frame portfolio. The construction engineers at Pinewood are able to develop pre-engineered structures which to the builder and developer creates not only a

lightweight structure but also speed of construction. Such is the advantage of light weight structures and in particular buildings between buildings between 3 and 8 storeys. It invariably creates attractive sub-structure cost savings, or in certain circumstances provides building opportunities on poor ground bearing capacity sites. Used in combination with other materials like steel, glass and stone, timber frame structures are making a significant contribution to our modern commercial landscape.

Large scale accommodation units for universities and colleges are ideally suited to Pinewood's timber frame construction technology. Internal fitting and decorating is easier in the dry construction environment.

## Multi occupancy

Timber frame can facilitate up to eight storeys in height with fire resistance ratings increasing to 1½ hours when heights of 18m plus are proposed. Further height restrictions are more to do with fire fighting reasons than fire resistance. Careful management of a large site can deliver an extremely efficient programme of works.



# Warm & Quiet



**The inherent properties of a timber frame building mean that it has naturally high levels of acoustic and thermal insulation. Once up and running, the standard insulation incorporated in the construction of a Timber Frame house results in a thermal and acoustic performance which easily meets the demands of the Building Regulations.**



The 'Part L' Building Regulations which came into effect in 2002 concerning the conservation of fuel and power set ever higher standards for the insulation properties of buildings. Thermal efficiency – measured as a 'U' value – is engineered into timber frame houses at the design stage. Timber buildings have always exceeded the required insulation thresholds and even now, with the stringent regulations, timber technology is ahead of the game.

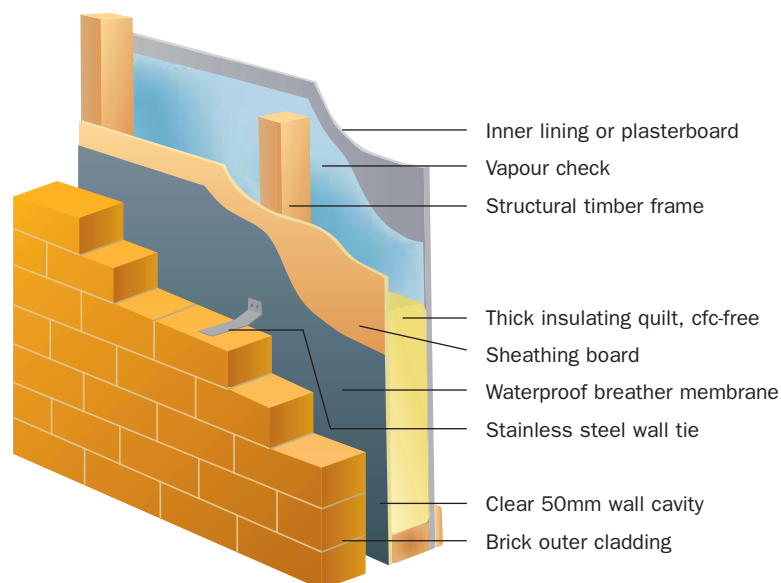
The regulations are toughest of all in Scotland, where fierce weather and harsh conditions are part of everyday life, so it is no surprise that timber frame is the most popular method of construction, accounting for more than 60% of houses built there.

'Part E' of the Building Regulations or the resistance to the passage of sound within buildings is also a significant issue for the construction industry, especially with increasing pressure on building land and with housing densities set to rise in the next decade, acoustic baffling between adjoining buildings is increasingly important. The building regulations have established detailed thresholds for acoustic insulation between individual rooms, floors and buildings and, once again, timber frame construction provides a cost effective solution to meet the required standards.

A timber frame house is simply a warm, comfortable and safe place to live – no wonder it is so popular.

## **A typical timber frame wall**

The structural timber frame is so strong that it takes all the loads of the house itself – without needing to use the outer brick cladding at all. This is a significant safety factor built into the design of these houses.





# Structural Solutions

**Pinewood offers the total structural package – everything you need from start to finish. The team can design the ideal structure for your needs and then oversee its production in our own manufacturing facility. After that you can rely on Pinewood to deliver the structure to site on time, ready for erection and handing over to follow-on trades.**

## Pinewood Service

Customer service is central to the Pinewood ethos. Skilled and experienced personnel are on hand to assist with every stage of your project, from design and estimating through to manufacture, delivery and on-site construction. Whatever the size of your project or nature of your question, call the Pinewood team on 01767 651218 and we'll guarantee you a constructive conversation.

## Green Construction

The energy efficiency of timber frame makes it a 'green' method of construction – less energy is used during their construction and they are more efficient to run. Recognised by leading environmentalists as THE most environmentally friendly method of building, timber frame uses renewable softwood sources. All of Pinewood's timber is sourced from carefully managed forests where two trees are planted for every one that is felled.

All timber frame buildings are built to last. In common with all modern methods of construction, timber frame complies with the minimum 60 year lifespan required by building societies and finance houses for institutional lending purposes.

## Guaranteed Buildings

All Pinewood homes are eligible for coverage by major insurers i.e. NHBC, Zurich, HAPM etc, guarantees which offer complete peace of mind to developers and buyers alike.

Pinewood is also one of the founder members of the UK Timber Frame Association, a trade association dedicated to promoting excellence and best practice within the industry. All of Pinewood's work is closely monitored by the ISO 9001-2000 quality assurance scheme, ensuring that a culture of quality permeates the whole organisation from design concept through to the building site. Product quality is further guaranteed by Pinewood's membership of the prestigious UKTFA 'Q' Mark plus scheme.





# Pinewood

The Station • Gamlingay • Sandy • Bedfordshire • SG19 3HB •  
Telephone: 01767 651218 • Fax: 01767 651928